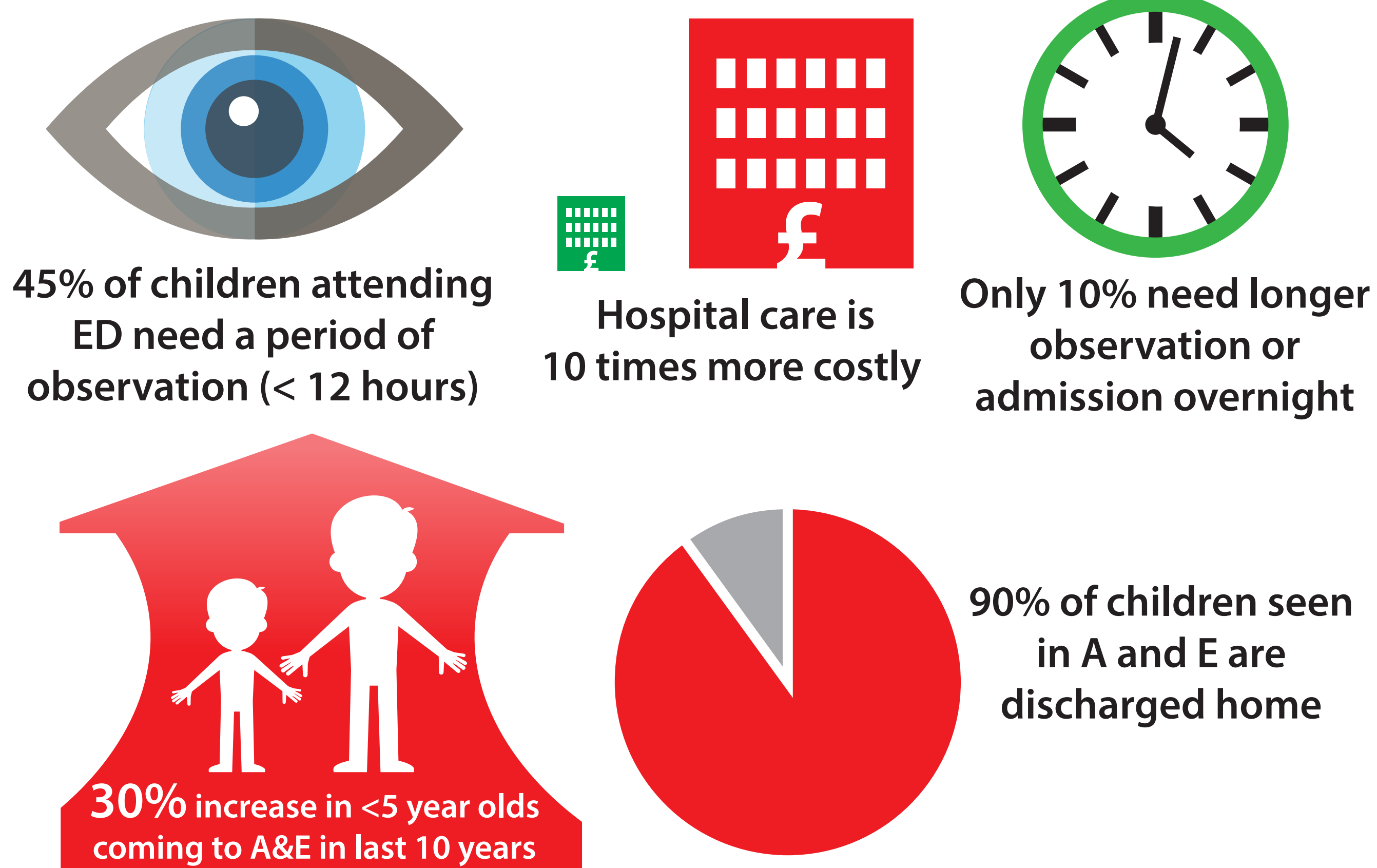


Keeping sick children out of hospital

Anne Pinches, Denise Stewart, Attia Gilani, Mathew Mathai

ACE in the context of urgent care

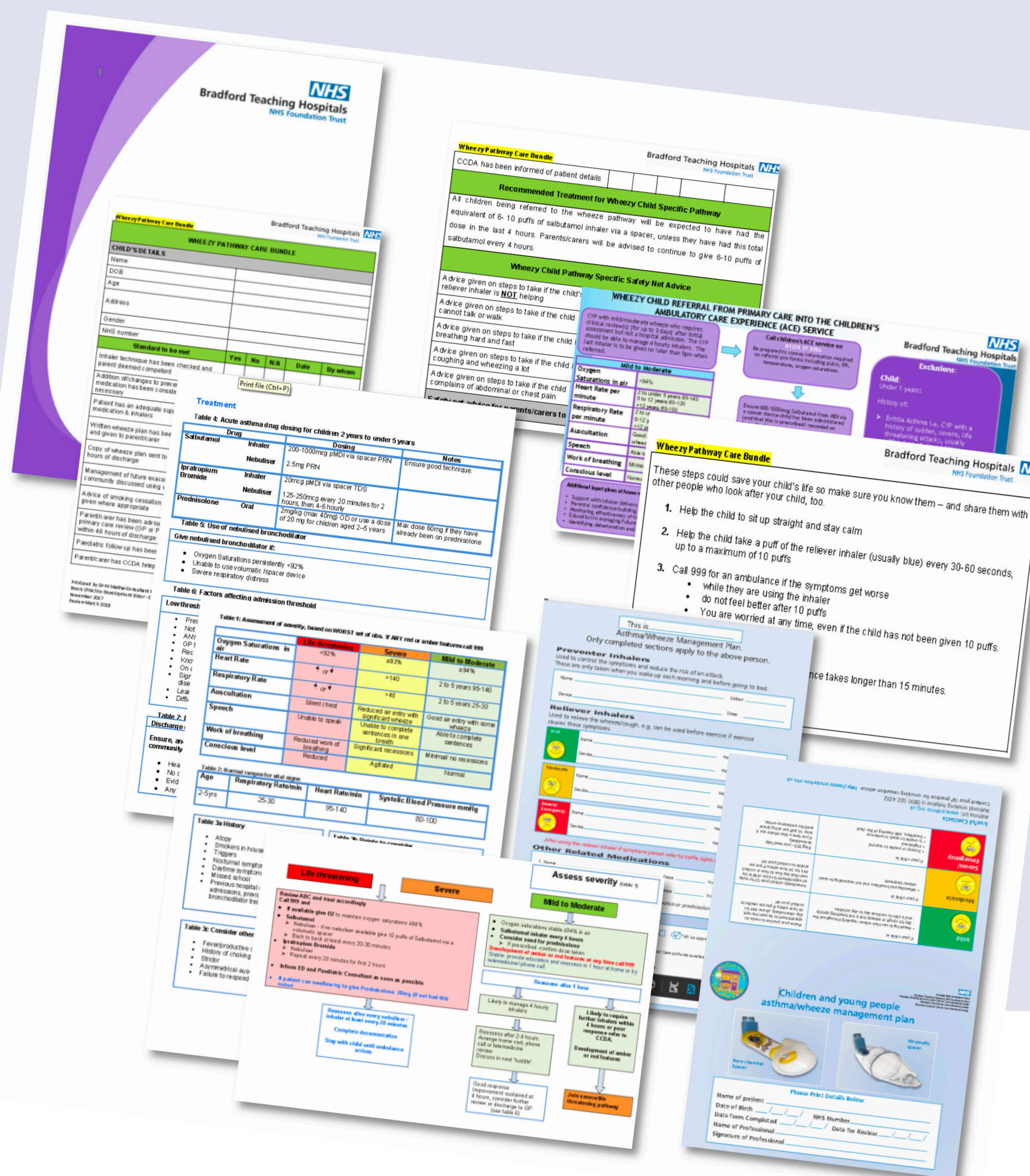


ACE – A paradigm shift in urgent care

- First in the UK
- 0-3 days home observation
- Delivered by Band 6 nurses
- Referrals taken from 1ary and 2ary care
- Paediatric Consultants take full clinical responsibility from referral
- Evidence based pathways
- Delivered according to a timeframe to ensure safety
- Care bundle which includes health education and promotion

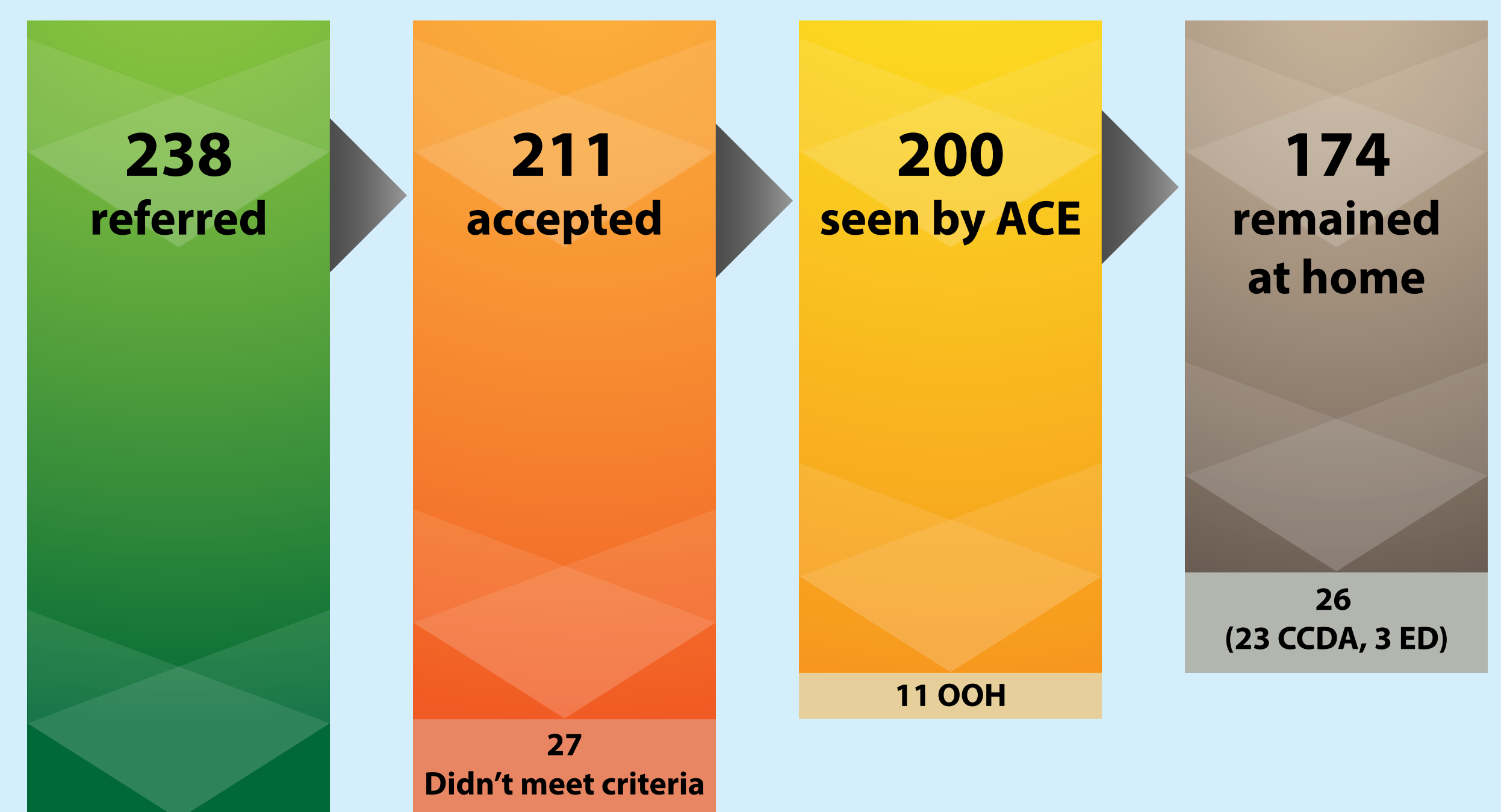
ACE Packaged

- Simple design and components
- Replicable across all Acute Trusts in the NHS
- Tested and robust clinical governance policies and processes

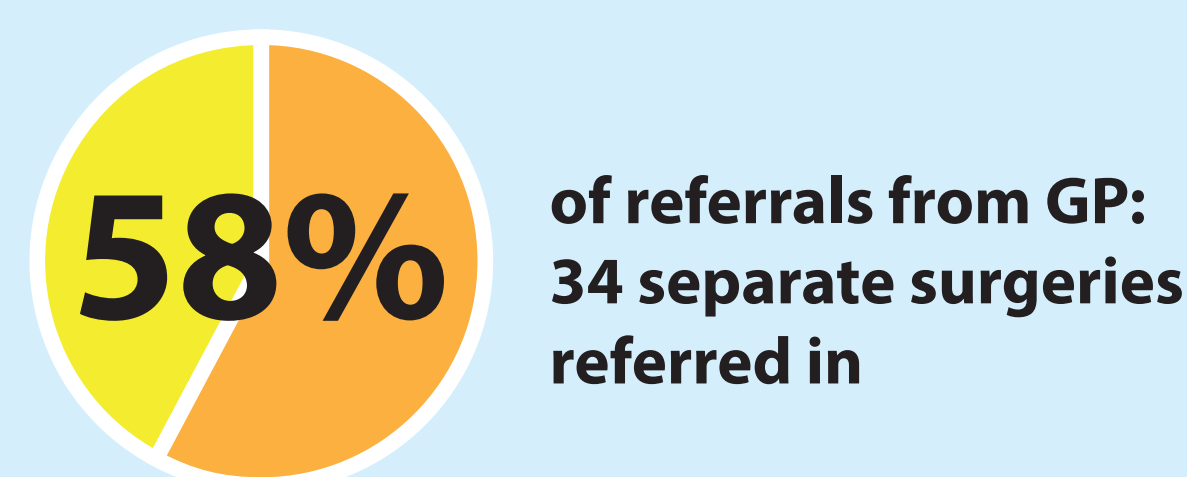


Results: Dec 2017 - Sept 2018

Referrals



87% appropriate referrals stayed at home



"The last time my son came out of hospital there wasn't anyone who came out and I was very nervous and didn't know all the information about his treatment. The nurse was really nice. You don't remember everything when you get home and you forget to ask questions at the time when you are in hospital so I think it is a really good idea"

"Absolutely fantastic arrangement so much more at ease, convenient for a busy family that needs to contend with other poorly complex children. My child was more relaxed receiving advice, treatment at his home. My mind was at ease and I felt fully re-assured my child was taken care of."

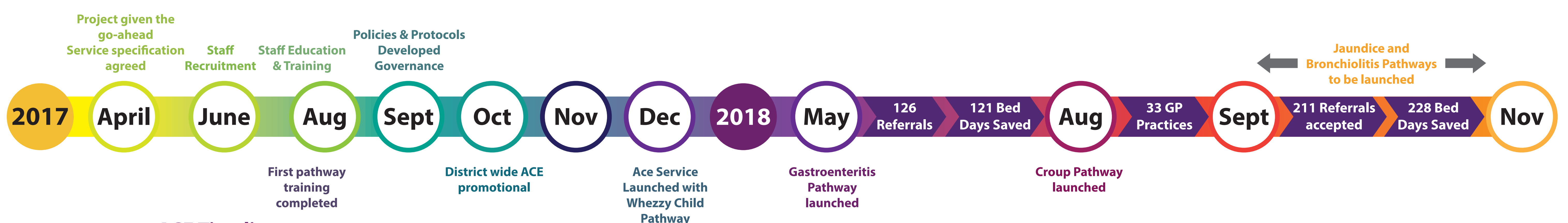
Conclusions and future development

- Family and child centred acute care at home
- Standardised, quality care that is replicable
- Collaborative approach and developing networks
- Leadership fellow to develop a clinical network for Paediatric Urgent Ambulatory Care in 2019
- Research linked:



If you would like to know more please visit us at: www.bradfordhospitals.nhs.uk/the-ace-service/

or Facebook, twitter



2017 - 2018 ACE Timeline